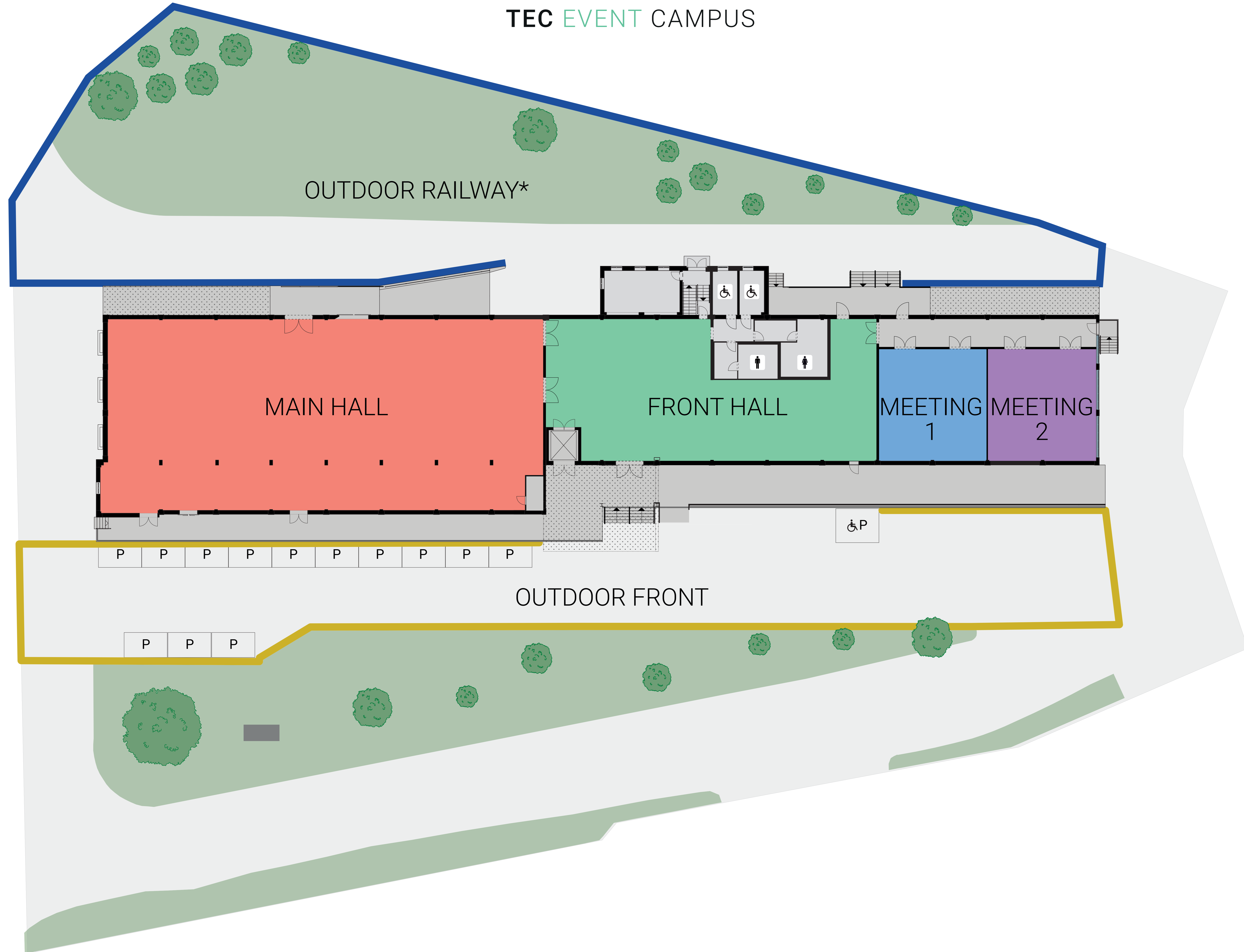




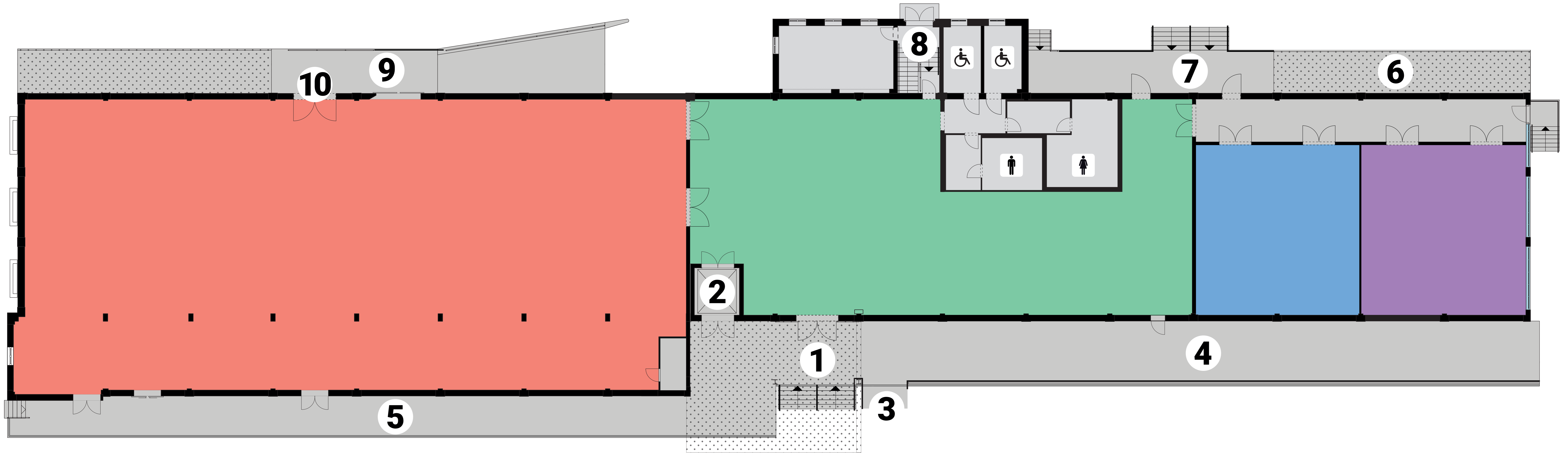
TEC EVENT CAMPUS



*Viaduct of the former Siemensbahn (1927-1980)



TEC EVENT CAMPUS



GROUND FLOOR

MAIN HALL

Space 834 sq m
Hight up to 5,10 m

FRONT HALL

Space 381 sq m
Hight up to 5,10 m

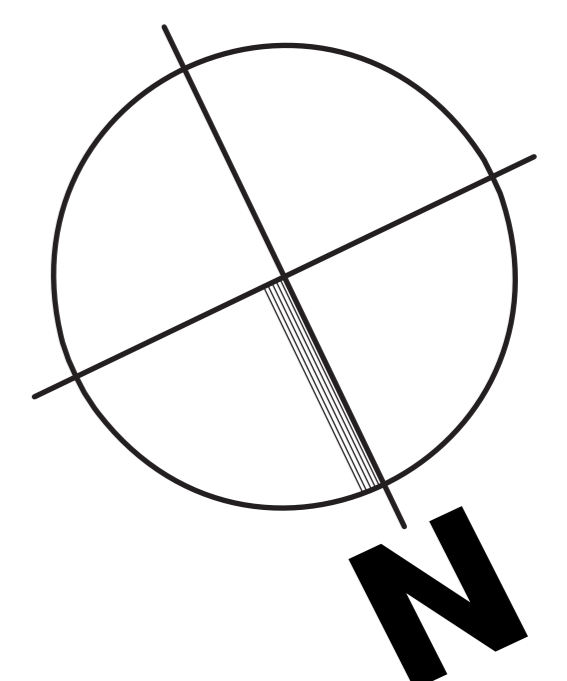
MEETING 1

Space 121 sq m
Hight up to 5,10 m

MEETING 2

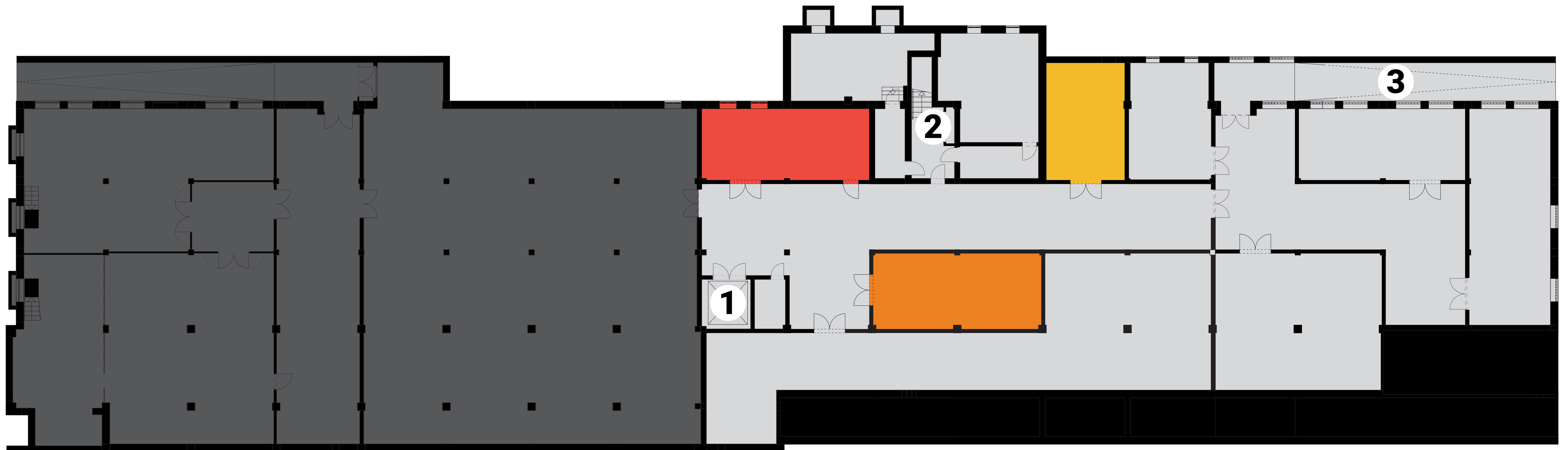
Space 121 sq m
Hight up to 5,10 m

- 1 Main entrance with canopy
- 2 Goods lift (3t load) with access to Front Hall and the space in front of the main entrance
- 3 Wheelchair lift (length 1,43 m x width 0,90 m)
- 4 Ramp to the main entrance (10% gradient)
- 5 Outdoor gallery space (approx. 120 sq m) with access to Main Hall
- 6 Ramp to storage space in the basement (12,5% slope)
- 7 Access to Outdoor Railway
- 8 Internal staircase
- 9 Access-ramp to Main Hall (10% gradient) with the possibility to bring in cars for car presentation
- 10 Gate for bringing in vehicles (width 2,80 m x height 3,07 m)





TEC EVENT CAMPUS



BASEMENT

CATERING

Space 50 sq m
Hight 3 m

STORAGE 1

Space 53 sq m
Hight 3 m

STORAGE 2

Space 38,5 sq m
Hight 3 m

*additional storage
space possible

- 1 Goods lift (3t load)
- 2 Staircase to Front Hall
- 3 Ramp to the outside (12,5% slope)

