

Short Report



TEC Event Campus | ©TEC Event Campus GmbH

TEC Event Campus

Wohlrabedamm 7
13629 Berlin

Tel: +49 30 470 807 00

Kontaktformular Webseite
<https://www.tec-event-campus.com/>

Welcome!

TEST RESULT

for

TEC Event Campus

13629 Berlin, Certificate-ID: PA-13252-2026



This offer was classified according to
the criteria of the nationwide label

»Tourism for All«

and, in the period from

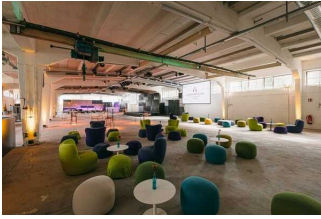
May 2026 – April 2029

is entitled to use the label

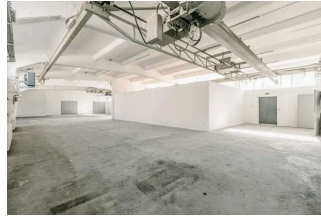
»Accessibility checked«

and the associated pictograms

in accordance with the contract.



TEC Event Campus
©TEC Event Campus GmbH



TEC Event Campus
©TEC Event Campus GmbH



TEC Event Campus
©TEC Event Campus GmbH



TEC Event Campus
©TEC Event Campus GmbH



TEC Event Campus
©Rolf Schrader

Overview

- approx. 1,450 m² indoor event area and approx. 2,900 m² outdoor area
- Events for up to 1,000 people in the historic industrial building
- vehicle presentations, fashion shows, trade fairs, workshops, parties, conferences or any other type of event
- exclusive event location
- located in the north of Charlottenburg in the immediate vicinity of Siemensstadt
- approx. 10 minutes' drive to Messe Berlin, approx. 40 minutes' drive to BER airport
- 62 parking spaces on the premises

Accessibility at a glance

- Step-free access to the building/premises (via lift/ramps)
- All guest-accessible and elevated rooms and facilities are step-free or accessible via a lift
- 90 cm minimum width for all elevated passageways/doors
- Restrooms for people with disabilities
- Service dogs are welcome

Information for people with walking difficulties and wheelchair users

All areas relevant for testing meet the quality criteria of the label "**Accessibility certified – partially accessible for people with walking disabilities and wheelchair users**".

Some **information on accessibility** are listed below. For detailed information please see the evaluation report.

- The nearest bus stop, "Wohlrabedamm Mitte" (Bus Line 139), is about 400 meters from the entrance.
- There are two parking spaces for people with disabilities. However, these are not marked accordingly.
- All rooms and facilities accessible to guests are either step-free/at ground level or accessible via ramps or a lift.
- The ramp to the entrance has a longitudinal slope of 12%, and the ramp between the Main Hall and the outdoor area has a slope of 10%.
- All doors and passageways accessible to guests are at least 90 cm wide.
- There are two public restrooms for people with disabilities, both of which are accessible from either side (at least 90 cm). Flip-up grab bars are available on the left and right sides of the restroom.

Information for people with hearing impairments and deaf people

Some **information on accessibility** are listed below. For detailed information please see the evaluation report.

- There is no visually clearly perceptible strobe or flashing signal (e.g. in case of fire alarm).
- There is no inductive hearing system in the conference room.
- Information for orientation is available in written form and in the form of pictograms.

Information for visually impaired and blind people

Some **information on accessibility** are listed below. For detailed information please see the evaluation report.

- Service dogs are welcome.
- The entrance area lacks visual contrast.
- Signage (for wayfinding) is designed with easily readable, high-contrast text.
- All elevated areas accessible to guests are illuminated with bright, glare-free lighting.
- Stair treads lack high-contrast edges. Stairs have handrails on both sides.
- Information is not available in raised lettering or Braille.

Information for guests with cognitive impairments

Some **information on accessibility** are listed below. For detailed information please see the evaluation report.

- The name or logo of the company/facility is clearly recognisable from the outside.
- The destination of the respective path is partly in sight.
- Information for orientation is available in written form and in the form of pictograms.
- There is no information available in plain language.

Image Gallery

We have put together some photos from the company / offer for you. You can find more photos in the detailed reports.



Parking

©Rolf Schrader



Entrance

©Rolf Schrader



Entrance

©Rolf Schrader



Entrance

©Rolf Schrader



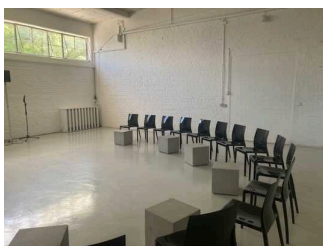
Front Hall

©Rolf Schrader



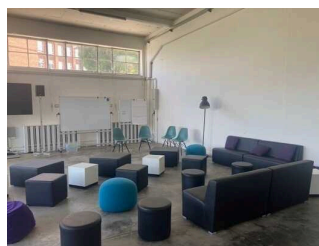
Meeting Rooms 1 and 2

©Rolf Schrader



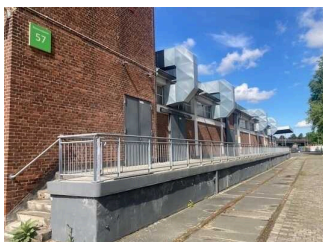
Meeting Rooms 1 and 2

©Rolf Schrader



Meeting Rooms 1 and 2

©Rolf Schrader



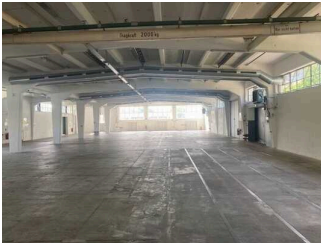
Outdoor area

©Rolf Schrader



Outdoor area

©Rolf Schrader



Main Hall

©Rolf Schrader



**Public toilet
for people with
disabilities (right)**

©Rolf Schrader



**Public toilet
for people with
disabilities (left)**

©Rolf Schrader



Aids

©Rolf Schrader



**Operating elements /
guidance system**

©Rolf Schrader



**Operating elements /
guidance system**

©Rolf Schrader

Information on the "Tourism for All" labeling system

All establishments and locations certified with the label "Tourism for All" meet the following quality criteria:

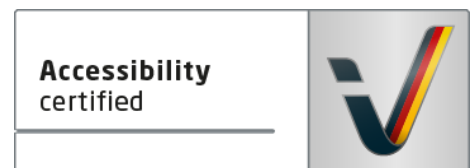
- Data and information on accessibility are collected and checked on site by **external, specially trained evaluators**. The method is not based on self-assessments.
- Data on accessibility is available **in detail** and can be viewed by the guests.
- At least one staff member has successfully passed a **training** on "**Accessibility as a comfort and quality feature**".

The labeling – explanation of the logos and pictograms

The label "**Information about Accessibility**" indicates that detailed and verified information on accessibility is available for all groups of people.



The label "**Accessibility certified**" is based on "Information about Accessibility". It means that the quality criteria defined for specific groups of people are met partially or completely.



The label "**Accessibility certified**" is available in two requirement levels:

"Accessibility certified: partially accessible".

The quality criteria are partially fulfilled for the pictured group of people, i.e. the establishment/location is partially accessible for wheelchair users. The "i" in the pictogram indicates that it is recommended to read again carefully whether the offer meets all (your oder the guest's) individual requirements.



"Accessibility certified: accessible".

The quality criteria are fulfilled for the pictured group of people, i.e. the establishment/location is accessible for wheelchair users.



There are defined quality criteria for **seven groups of people** and a **specific pictogram** for each group.

People with walking disabilities



Wheelchair users



People with hearing impairment



Deaf people



People with visual impairments



Blind people



People with cognitive impairments

